



Solvency & Financial Condition Report 2024

Assurant Europe Life Insurance N.V.



ASSURANT[®]

Contents

Executive Summary	1
A Business and performance.....	3
A.1 Business.....	3
A.2 Underwriting Performance	5
A.3 Investment Performance	6
A.4 Performance of other activities	6
B System of governance.....	7
B.1 General information on the system of governance.....	7
B.2 Fit and Proper requirements.....	9
B.3 Risk management system including the own risk and solvency assessment	10
B.4 Internal control system	12
B.5 Internal audit function	13
B.6 Actuarial function.....	13
B.7 Outsourcing.....	14
B.8 Any other disclosures.....	14
C Risk management.....	15
C.1 Underwriting Risk.....	15
C.2 Market Risk	17
C.3 Credit Risk	20
C.4 Liquidity Risk	21
C.5 Operational Risk.....	22
C.6 Other material risks.....	22
C.7 Any other disclosures.....	23
D Valuation for Solvency purposes	24
D.1 Assets.....	24
D.2 Technical provisions.....	25
D.3 Other liabilities.....	27
D.4 Alternative methods for valuation.....	27
D.5 Any other disclosures.....	27
E Capital management	28
E.1 Own funds	28
E.2 Solvency Capital Requirement and Minimum Capital Requirement	29

E.3 Use of the duration-based equity risk sub-module in the calculation of the Solvency Capital Requirement	30
E.4 Differences between the standard formula and any internal models used	30
E.5 Non-compliance with the minimum capital requirement and significant non-compliance with the solvency capital requirement.....	30
E.6 Any other disclosures	30
F Quantitative Reporting Templates	31

Executive Summary

Assurant Europe Life Insurance N.V. (further referred to as “AEL” or “the company”), is a life insurance company, incorporated in the Netherlands as a Naamloze Vennootschap (N.V.; public limited company) on 29 October 2018. It received its license to operate on 9 June 2020. AEL is supervised by De Nederlandsche Bank (“DNB”) and the Autoriteit Financiële Markten (“AFM”).

This report has been prepared to comply with the reporting requirements of the EU-wide regulatory framework for insurance companies, Solvency 2, which came into force as of 1 January 2016.

Business and performance

AEL manages portfolios in the following segments of insurance:

- Creditor Life - comprising life insurance; and
- Creditor Health - comprising disability insurance, connected to life policies.

These segments went into run-off in 2018 and no new policies were written since. The life and health policies were usually sold together and in combination with a consumer lending arrangement, issued by one of AEL’s business partners (banks and similar institutions).

The company assumed two EU-insurance portfolios of two Assurant group companies domiciled in the United Kingdom, on 2 November 2020.

AEL closed the year 2024 with a statutory profit after tax of Euro 183,666.

Neither in 2024 nor in previous years did the company experience significant additional (long-)COVID19 related claims.

Section A provides an overview of business performance in the year under review.

System of governance

AEL is governed by a two-tier board structure with a Board of Directors and a Supervisory Board of Directors. AEL implemented the governance requirements of the Solvency 2 regime and has four key functions: actuarial, compliance, risk management and internal audit.

Refer to section B for further details.

Risk profile

As a provider of life and health insurance, the company is exposed to a number of risks, the main ones being Underwriting risk and Market risk. The company invests in fixed income instruments and is exposed to market volatility and default risk, both for which appropriate capital is set aside.

Section C demonstrates in further detail to which risks the company is exposed and how these risks are mitigated.

Valuation for solvency and statutory purposes

This SFCR provides insight in the company's balance sheet and available capital prepared in accordance with Solvency 2 guidelines. These guidelines strive for a market consistent valuation. AEL has opted to prepare its statutory financial statements in accordance with these Solvency 2 principles. Consequently, this document does not show valuation differences between the two standards but only some classification differences.

Chapter D explains the Solvency 2 (and statutory) valuation in more detail.

Capital management

The company's capital management focuses on ensuring the orderly run-off of the in-force portfolio. Due to the limited size of the portfolio, the company's solvency position is determined by the Absolute Minimum Capital Requirement (AMCR). The year-end solvency position is as follows.

	2024	2023
€'000		
Eligible Own Funds	6,042	6,389
SCR	553	652
AMCR	4,000	4,000
Solvency Ratio %	151%	160%

Further detail is provided in Section E.

Outlook

The outlook for the year 2025 appears relatively stable. Whilst in general macro-economic indicators remain weak or modest, the Company is mainly exposed to movements in the capital markets and expectations are for a relatively stable interest rate environment, in spite of geopolitical uncertainties. Inflation will in the short term likely remain above the long term desired 2%, but the company is less exposed to inflation due to its portfolio consisting of fixed benefit policies.

A Business and performance

A.1 Business

A.1.1 Name and legal form

AEL is a life insurance company based in Amsterdam, the Netherlands. The company was incorporated on 29 October 2018 and received its license to operate as a life insurer on 9 June 2020. It is a Naamloze Vennootschap (N.V.).

A.1.2 Name and contact details of the responsible supervisory authorities

Prudential supervision of AEL is the responsibility of De Nederlandsche Bank (“DNB”), Westeinde 1, 1000 AB, Amsterdam, The Netherlands.

Financial conduct is supervised by the Autoriteit Financiële Markten (“AFM”), Vijzelgracht 50, 1017 HS, Amsterdam, The Netherlands.

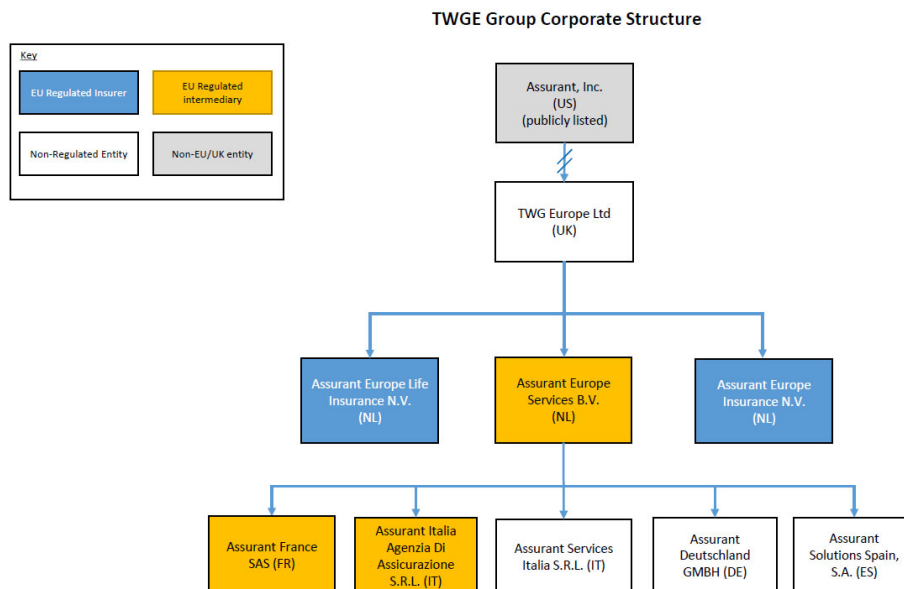
A.1.3 Name and contact details of external auditor

AEL’s external auditor is Deloitte Accountants B.V., Gustav Mahlerlaan 2970, 1081 LA, Amsterdam, The Netherlands.

A.1.4 Shareholders and position within the group

AEL’s shares are held by TWG Europe Ltd, one of the holding companies ultimately owned by Assurant Inc, a public company listed on the New York Stock Exchange (ticker: AIZ), registered in Delaware, United States of America.

A simplified version of the group’s corporate structure is shown below.



Notes:

1. TWGE Group refers to TWG Europe Limited and its subsidiaries (direct and indirect).
2. All depicted entities are 100% owned by their immediate shareholder (shown by blue connecting lines) except for Assurant, Inc. which is publicly listed.
3. This chart does not show intermediary holding companies above TWGE.

AEL has issued 5,440,000 shares of which 5,440,000 (100%) are owned by TWG Europe Ltd.

A.1.5 Material lines of business and material geographical areas where business is carried out

AEL's principal activity is the maintenance of a small life & health portfolio with risks in the European Union.

AEL distinguishes the following segments:

- Creditor Life (mortality cover)
- Creditor Health (disability, accident)

Its Solvency 2 lines of business are:

- Life
- Health SLT

These lines of business are illustrated in the table below, using financial information for the year ended 31 December 2024.

€'000	Technical provisions (excl. risk margin)			Premiums earned		
	Gross	Ceded	Net	Gross	Ceded	Net
Life	1,871	-	1,871	433	-	433
Health SLT	0	-	0	0	-	0
Total	1,871	-	1,871	434	-	434

The territories of operation are The Netherlands, Belgium and Ireland.

The portfolio does not hold policies with discretionary benefits or embedded guarantees.

The portfolio's remaining duration is such that the UFR does not impact technical provisions.

A.1.6 Significant business or other events that have occurred during the reporting period

There were no events of significance that impacted the company.

A.1.7 Business performance

The table below shows the performance of the company's operations by Solvency 2 section (which in case of AEL is also applied for statutory purposes).

		2024	2023
€'000			
Underwriting performance	Section A.2	-61	146
Investment performance	Section A.3	290	371
Performance of other activities	Section A.4	-	-
Profit/loss before tax in statutory financial statements		228	517

A.2 Underwriting Performance

Underwriting performance per Solvency 2 line of business is summarised in below table.

	Line of Business for: life insurance obligations		Total
	Health insurance	Other life insurance	
	C0210	C0240	C0300
Premiums written			
Gross	118	312,710	312,828
Reinsurers' share	0	0	0
Net	118	312,710	312,828
Premiums earned			
Gross	494	433,013	433,507
Reinsurers' share	0	0	0
Net	494	433,013	433,507
Claims incurred			
Gross	29,369	198,542	227,911
Reinsurers' share	16,005	0	16,005
Net	13,364	198,542	211,907
Changes in other technical provisions			
Gross	0	0	0
Reinsurers' share	0	0	0
Net	0	0	0
Expenses incurred			
Administrative expenses			
Gross	0	119,477	119,477
Reinsurers' share	0	0	0
Net	0	119,477	119,477
Investment management expenses			
Gross	0	0	0
Reinsurers' share	0	0	0
Net	0	0	0
Claims management expenses			
Gross	0	0	0
Reinsurers' share	0	0	0
Net	0	0	0
Acquisition expenses			
Gross	0	163,517	163,517
Reinsurers' share	0	0	0
Net	0	163,517	163,517
Overhead expenses			
Gross	0	0	0
Reinsurers' share	0	0	0
Net	0	0	0
Other expenses			0
Total expenses			282,994
Total amount of surrenders	0	0	0
Interest income			265,918
Unrealised gains on investments			23,759
Realised gains on investments			0
Technical result on life insurance operations			228,283

Premiums earned (net)

This represents the sum of premiums earned during the year, net of premiums attributable to reinsurers. Premiums earned follow the risk emergence pattern of the different types of policies.

Claims incurred (net)

Comprises the sum of the claims paid and the change in the provision for claims outstanding during the financial year, net of reinsurance.

Changes in other technical provisions

Not applicable.

Expenses incurred

This represents all technical expenses incurred by the company in relation to its insurance operations.

Other expenses

All expenses incurred relate to the insurance operations.

Underwriting result

Following the updating of all assumptions to most recent experience, the underwriting result measured in accordance with Solvency 2 valuation principles was slightly negative. AEL incurs very few death claims each year, which is a source of volatility and in the year under review the number of claims were slightly higher than average.

The expense result was positive, as the cost structure that AEL implemented proved more efficient than that of the companies that AEL assumed the portfolios from during the transfer in November 2020.

Geographical areas

All business managed is in the EU. The territories of operation are The Netherlands, Belgium and Ireland.

A.3 Investment Performance

A.3.1 Investment holdings

The company's investment portfolio as at 31 December of the current period and the investment income generated in the period under review is as follows.

	Position as at end of period		Income for the period	
	€'000	%	€'000	%
Government bonds (ETFs)	788	9%	17	6%
Corporate bonds (ETFs)	3,691	43%	153	53%
Cash and deposits (incl. MMFs)	4,086	48%	120	41%
Total	8,564	100%	290	100%

Investment performance was positive mainly thanks to the coupons paid by corporate bonds, while also money market funds were still offering attractive returns.

A.4 Performance of other activities

The company's only activity is that of life insurance business.

A.5 Any other disclosures

There is no other information required to be disclosed regarding the performance of the business.

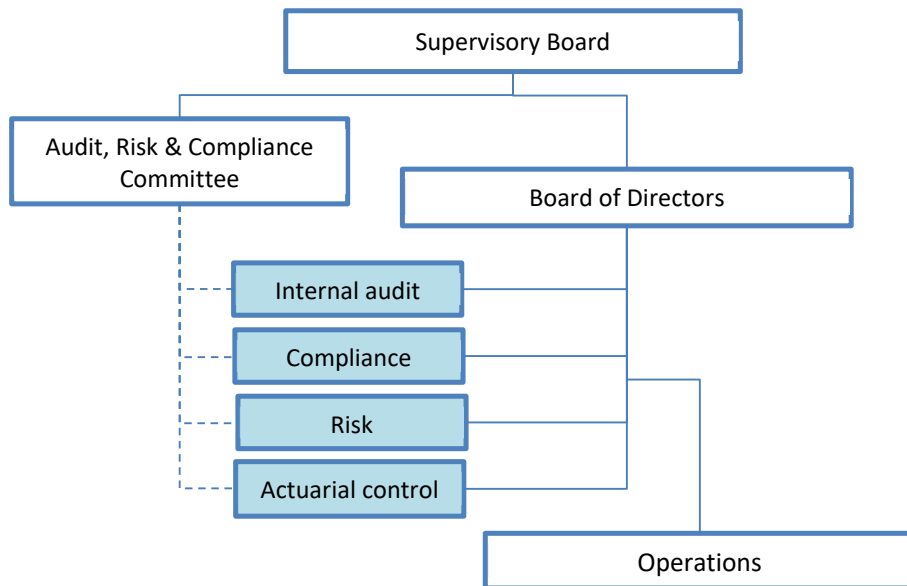
B System of governance

B.1 General information on the system of governance

B.1.1 Governance structure

AEL’s system of governance is embedded within the overarching system of governance of the Assurant group. The design and effectiveness of system of governance is responsibility of the Board of Directors. The Board of Directors is supervised by an independent board of Supervisory Directors. The Board of Directors delegates responsibilities for certain functions to Key Function Holders (in blue in below table). The company maintains a governance map which documents the detailed implementation of the system of governance. This includes the terms of reference and detailed roles and responsibilities for the key function holders.

The governance structure is summarised in the picture below.



B.1.1.1 Supervisory Board

The Supervisory Board supervises the Board of Directors and oversees that the Board of Directors acts in accordance with the Company’s strategy, policies and objectives. It is collectively responsible for coaching and advising the Board of Directors when necessary.

Sub-Committee

The company’s Supervisory Board has established an Audit, Risk & Compliance Committee.

B.1.1.2 Board of Directors

The Board comprises the Chief Executive Officer (“CEO”), the Chief Financial Officer (“CFO”), and the Head of Risk.

The Board of Directors sets the strategy and business plan within the context of Assurant group's plans and ensures that the necessary financial and human resources are in place to meet the organisation's objectives.

B.1.1.3 Key function holders

The Board of Directors has delegated the execution of certain key functions to senior management / key function holders. These are functions that have a material effect on the system of internal control in the business and influence material decision making. The key functions have been defined considering the requirements of Solvency 2 regulations and guidance from regulators. The key functions are as follows:

- Risk management
- Internal audit
- Actuarial (control)
- Compliance

Each Key Function Holder prepares a functional performance report to the board(s) on a quarterly basis (risk management & compliance) or annual basis (actuarial and internal audit).

The detailed responsibilities for each Key Function Holder are documented in the Governance Map which is reviewed and approved by the Board of Directors on a regular basis. This ensures that each Key Function Holder has the necessary authority and operational independence to carry out their role. On an annual basis, as part of the Business Planning process, each Key Function Holder will ensure that they have the necessary resources to deliver on their responsibilities. The Business plan is approved by the Board of Directors.

The responsibilities of each of the key-functions holders are summarised below.

- The Head of Risk, being a Board of Directors' member, attends and provides reporting to the Board of Directors' meetings and the Audit Risk & Compliance Committee meetings and has responsibility for the development and review of the risk management system, governance system and internal control system; implementation of risk management processes and systems; reporting on the risk profile of the business, preparation and presentation of the Own Risk and Solvency Assessment (ORSA).
- The 2nd line Actuary attends of the meetings of the Board of Directors at which his reporting is on the agenda. The 2nd line Actuary oversees all actuarial aspects of strategy and financial management. Oversight of the appropriateness of methodologies, models, bases of calculation of technical provisions; assessment of the sufficiency and quality of the data used in the calculation of technical provisions; reporting on the reliability and adequacy of the calculation of technical provision; advising of any concerns regarding the sufficiency of financial assets to meet liabilities to policies; the modelling of risk capital for the ORSA, including advising on suitable stress and scenario testing; reinsurance arrangements; oversight of investment strategy and asset-liability matching.
- The Head of Internal Audit provides reporting to the Board of Directors and to the Audit Risk & Compliance Committee and is responsible for providing reasonable assurance to the Board of Directors and the Audit Risk & Compliance Committee about the adequacy and effectiveness of the internal control environment including procedures, controls and policies and for the establishment of an annual audit plan.
- The Head of Compliance provides reporting to the Board of Directors and to the Audit Risk & Compliance Committee and is responsible for ensuring that the company fulfils its regulatory, legislative, and corporate standards and obligations and for assessing the adequacy of measures taken to prevent non-compliance. The Head of Compliance is also responsible for upholding sanction and anti-money-laundering measures.

B.1.2 Material changes in the system of governance

In the reporting period, no material changes were made to the system of governance.

B.1.3 Information on the Remuneration Policy

The Board of Directors, management and employees of AEL are employed by Assurant Europe Services BV (AES). AEL and AES are under common management and AES applies the same practices that would be applied if management and employees were employed by AEL directly.

The Remuneration Policy for the Board of Directors is set by the Annual General Meeting. The periodical determination of its remuneration is set by the Supervisory Board, in accordance with that Remuneration policy.

The Board of Directors, management and employees are remunerated as follows:

- Fixed remuneration, based on a (group wide) benchmark / role content basis.
- Variable remuneration, based on personal and company financial performance, such within the local legal limits applying (performance related variable remuneration up to 20% of fixed/guaranteed income).

Variable remuneration is not deferred.

Supervisory Board Members receive a fixed fee.

B.1.4 Transactions with shareholders, with persons who exercise a significant influence on the undertaking, and with members of the administrative, management or supervisory body.

In June, the company paid a dividend of EUR 500,000 to its shareholder.

B.1.5 Assessment of the adequacy of the system of governance

The system of governance is set up in accordance with Solvency 2 guidelines and the design is assessed periodically.

The system of governance is periodically reviewed by the Board to ensure that it is effective and it provides for sound and prudent management of the business. Such reviews take into account the nature, scale and complexity of the business. The scope, findings and conclusions of such reviews are documented and reported to the Board with suitable feedback loops in place to ensure that any follow-up actions are undertaken and recorded.

Based upon the most recent internal review conducted, the Board has assessed the system of governance to be adequate and appropriate to the nature, scale and complexity of the risks inherent in the business.

Key Function Holders and External audit have direct access to the Audit Risk & Compliance Committee and the Supervisory Board to share any concerns they may have about the governance framework.

B.2 Fit and Proper requirements

The company has a Fit and Proper policy that addresses that appropriate resource are in place to deliver effective and efficient management of the business. The Company takes appropriate steps to ensure that (senior) managers, individuals responsible for key functions and those working in key functions are fit and proper to carry their responsibilities. The requirements are proportionate to the role and responsibilities of the position. Checks are made on initial appointment and are re-assessed when deemed required. The results of all assessments are reported to the Board of Directors. For new employees, these tests include some or all of the following:

- Criminal record checks.
- Credit referencing.
- Curriculum Vitae detailing skills, qualifications and experience.

- Continuous professional development / performance management framework.
- Membership of professional institutes.
- The recruitment and selection process in place at the time of appointment.
- Permanent education requirements, which are reported on quarterly and monitored by the Compliance Officer.

B.3 Risk management system including the own risk and solvency assessment

B.3.1.1 Risk Management System

AEL has an established a risk management system which comprises:

- (a) a strategy;
- (b) risk management and internal control policies;
- (c) a risk management processes;
- (d) control activities.

In addition, it includes a risk management system review; reporting and disclosure; independent assurance and regulatory compliance monitoring.

The risk management system applies to all categories of risk, and, unless stated otherwise, the following information applies for each separate risk category.

B.3.1.2 Risk management strategy

AEL's risk management strategy ensures that the company's risk appetite is not exceeded. Risks are assessed, defined and approached in one of the following four ways, depending on the nature of the risk and related circumstances.

- Risk acceptance: AEL accepts risks that fall within the boundaries/limits defined in the risk appetite statement. Any risk falling outside the specified limits or boundaries is reviewed to ascertain if the risk appetite requires updating or if an exception should be granted.
- Risk reduction/minimisation: these activities generally relate to control and mitigation activities, and therefore this strategy may include, amongst others, any or all of the following: the design of new process or accounting controls, contracting controls, changes in product design, improvement in a set of Terms and Conditions, or other changes designed to control and/or mitigate risk.
- Risk transfer: risk is transferred principally through reinsurance agreements. These may include, but are not limited to stop loss, excess of loss, quota share, or other such treaties. Other types of risk transfer can also be considered.
- Risk Avoidance: where an activity is outside the risk appetite of the AEL, AEL will seek to avoid exposure to that type of risk.

B.3.1.3 Process

AEL implemented the three lines of defence model and enforces the requirement for first line management of risk, with oversight and challenge from the second line risk, actuarial and compliance functions and third line internal audit function confirmation, as follows.

Oversight	Supervisory Board	<ul style="list-style-type: none"> Supervisory Board - independent oversight of Board of Directors
Responsibility	Board of Directors	<ul style="list-style-type: none"> Establishes risk appetite and strategy Responsible for 1st and 2nd line activities
3rd Line of Defence	Internal Advisory Services (Internal Audit)	<ul style="list-style-type: none"> Provides independent assurance on the effectiveness of first and second line of defence functions
2nd Line of Defence	Risk Management Function Compliance Function Actuarial Function	<ul style="list-style-type: none"> Design, interpret and develop overall risk management framework Overview of AEL risk registers Monitor controls in place against key risks Challenges risk mitigation and acceptance Reports on risk exposures, issues, mitigations, and resolutions
1st Line of Defence	Business / Functions	<ul style="list-style-type: none"> Executive risk owners Owner of the risk management process Identifies, manages, and mitigates risks Identifies, manages, and reports on issues

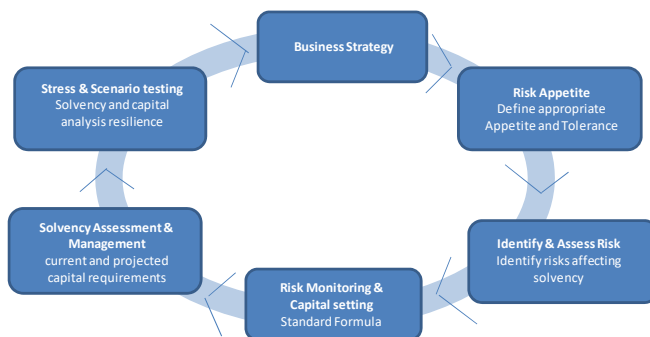
Business areas are responsible for completing quarterly Risk and Control Self-Assessments (RCSAs) which contribute to the Risk Register of the business.

B.3.2 Own Risk and Solvency Assessment

AEL annually conducts an Own Risk and Solvency Assessment (ORSA). This assessment considers the company’s strategy, its operating environment and the risks to which it is exposed and results in a forward-looking assessment of the potential risks and capital impacts which the company uses to assess its current and future capital needs.

ORSA Process

The table below show the steps in the ORSA process.



B.4 Internal control system

B.4.1 Description of system of internal control

AEL's internal control system is designed to provide reasonable assurance that its reporting is reliable, compliant with applicable laws and regulations and its operations are effectively controlled.

The Company operates a “three lines of defence model” for the management of risks and performance of internal control, which is adapted and applied for a company of the size and complexity of AEL. This is illustrated in the overview below. Broadly this means that the risk function is responsible for providing a framework for risk management and internal control, the business functions are responsible for implementing the framework and the Internal audit function is responsible for independently validating the appropriateness of both the design and its implementation. The actuarial and compliance functions also provide second line challenge, oversight and assurance.



B.4.2 Implementation of the compliance function

The Compliance Function operates within Assurant group's broader risk management framework and:

- is responsible for oversight and monitoring of compliance risk management and related control systems.
- supports the Board of Directors in managing compliance risks and embedding a culture of integrity in the organisation.
- develops the enterprise compliance strategy, structure, and processes of adherence to ethical standards and applicable rules and regulations.
- supports implementation of the compliance program and establishes and maintains effective compliance management and control systems.

The Compliance Function is independent of and takes an objective view on the operational activities of AEL. It provides timely advice to the Board of Directors or, where applicable the Supervisory Board on compliance related matters. If and when potentially significant misconduct in connection with AEL's business is detected, it ensures that reasonable steps are taken to respond to and resolve the (potential) misconduct. It oversees effective whistleblowing reporting channels and conducts or coordinates internal investigations of compliance violations. It develops and implements compliance policies and procedures, education, and trainings, and keeps abreast of regulatory and industry trends.

At least on an annual basis, the Compliance Function will draft the compliance plan, which describes the monitoring activities which the Compliance Function will perform, considering the risk ratings, supervisor priorities and audit results. The monitoring activities will be executed accordingly.

B.5 Internal audit function

B.5.1 Description of how the internal audit function is implemented

AEL's Head of Internal Audit (HoIA) is responsible for internal audit activities, in coordination with Assurant Inc.'s group Internal Audit Services (IAS) function. The HoIA is accountable to the Audit Risk & Compliance Committee (ARCC) of the Supervisory Board and has administrative responsibility to AEL's Chief Executive Officer.

The HoIA is responsible for regularly assessing the adequacy of governance, risk management and the internal controls system and reports his findings to the ARCC of the SB.

Internal audit activities are coordinated with IAS as to ensure coordination of audit plans, coordination of resource planning, alignment on audit process, reporting and follow-up monitoring.

The annual (audit plan (based on a three-year cycle) is prepared and submitted to the SB for review and confirmation. Upon confirmation, the HoIA distributes the plan to business leaders and executes the plan during the course of the audit plan period. Additionally, at HoIA discretion or at the request of the ARCC, or management, other unannounced audits may be performed.

Initially the entire risk universe is considered during annual audit planning and subsequent revisions to plan, the highest-risk items are included as risk-based audits. Certain processes, while not rising to a level of significant risk, are still included on a cyclical basis to ensure breadth of coverage over a span of time.

Secondly, risks associated to the audit are identified and their mitigation evaluated via an assessment of the design and operational effectiveness of key internal controls, information systems, governance, risk management, and financial reporting supplemented where necessary by a programme of testing, creating audit programs for every project.

B.5.2 Description of how the internal audit function maintains independence and objectivity

The Internal audit function's mandate and responsibilities are documented in the Internal Audit Charter. It defines the framework for the activities of the Internal Audit function and is approved by the Supervisory Board. The charter allows Internal audit to be independent of the functions audited and it provides full, free, and unrestricted access to all operations, records, property, and personnel. Additionally, it provides the authority to allocate resources, set frequencies, select subjects, determine scope of work, and apply the techniques required to accomplish audit objectives.

B.6 Actuarial function

The Board of Directors appoints the Actuarial Function Holder. The holder needs to meet the fit and proper requirements and hold an appropriate practicing certificate from the Actuarial Society (Actuarieel Genootschap) or a comparable foreign qualification.

The Actuarial Function Holder reports to the Head of Risk for management purposes but has a line of escalation to the Supervisory Board (via the Audit Risk & Compliance Committee).

The responsibilities of the Actuarial Function Holder are defined in a Charter. As part of ensuring responsibilities are carried out in an effective and efficient manner, the Actuarial function operates in close cooperation with the members of the 1st line actuarial function team.

The Actuarial Function Holder coordinates the calculation of technical provisions, provides opinions on the underwriting policy and reinsurance arrangements, and contributes to the effectiveness of the risk management system.

The actuarial function is responsible for the process of calculating the technical provisions, as well as for the calculation of the SCR and the MCR. In addition, the actuarial function is responsible for reviewing and calculating the appropriateness of insurance product pricing and contributing to the governance committees, capital initiatives and regulatory returns where appropriate.

The Actuarial Function Holder provides quarterly updates and an annual report to the Board of Directors and the Supervisory Board, detailing the methodology, assumptions, and results of its work.

B.7 Outsourcing

AEL operates as part of the Assurant group and is tightly linked to the European operations. The company does not employ staff itself but instead benefits from shared services centres and centres of excellence and has entered into service agreements with the group entities that provide these services.

In the Netherlands, Assurant employees are employed by Assurant Europe Services B.V., a group company under the same management as AEL. The activities of these employees are not considered “outsourcing”.

AEL distinguishes between two types of outsourcing:

- Activities for which the Board of Directors cannot outsource functional responsibility but for which AEL makes use of individuals and infrastructure that are employed or owned by other group entities. These activities are managed as if directly employed /owned by AEL and are not considered “outsourcing”.
- Activities for which functional responsibility can be outsourced and which is considered critical or important outsourcing as defined by Solvency 2 definitions.

AEL’s Outsourcing policy sets the standards and controls required for selection of internal and external service providers as well as the requirements for ongoing management of such providers, with the aim of ensuring adequate oversight and governance of performance.

Critical or important outsourced functions are:

Outsourced Function	Outsourced to
IT & infrastructure management	Assurant group companies (US & UK)
Financial administration	Assurant group companies (UK)

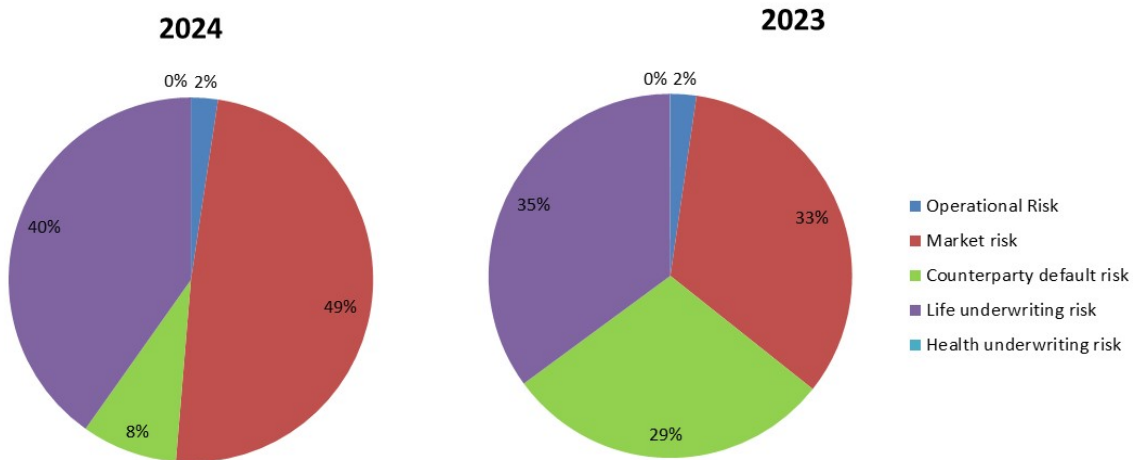
B.8 Any other disclosures

None.

C Risk management

The sections below provide a qualitative and quantitative summary of the risk profile for each category of risk. Where information is specific to each risk category it has been set out under the relevant heading. Where the information is common across all risk categories it has been included in Section C.7.

AEL is, more or less, equally exposed to life underwriting risk, which is consistent with the nature of its business, and market risk. This is a consequence of having a very small insurance portfolio against which funds are held for the volume of the AMCR and a buffer. As AEL invests in government and corporate bonds it is exposed to interest rate risk and spread risk. As of 2024, most of the company's liquidities are deposited in money market funds and therefore no longer attracting counterparty default risk. The chart below shows the distribution of the gross SCR by risk module (excluding the diversification effects between the risk modules) as per year-end.



Compared to 2023, market risk's relative share compared to life underwriting risk has increased as a consequence of the further run-off of the insurance portfolio and the requirement to maintain investments above the AMCR, whereas counterparty default risk has decreased by re-allocating cash at bank to money market funds.

A further breakdown of market and non-market risk capital requirements is provided in the following sections.

C.1 Underwriting Risk

C.1.1 Qualitative review of risk profile

Underwriting Risk - Life

AEL is exposed to the risk of having to pay more mortality claims or incur higher than expected average costs per claim (mix of sums insured) than foreseen when pricing its insurance products.

Underwriting Risk - Disability-morbidity

AEL is exposed to disability-morbidity risk; the probability of having to pay out more benefits due to increased disability-morbidity.

In case of annuities, disability-morbidity risk carries the possibility of recovery, meaning insureds can recover from their illness and benefits can cease to be paid at that point.

AEL did not write policies on a standalone basis, but as wrappers to consumer borrowing arrangements, like mortgage loans or consumer credits, meaning they were less exposed to disability-morbidity risk compared to insureds that had a health driven incentive to buy protection.

Underwriting Risk - Expense

AEL is exposed to expense risk. This arises if future expenses turn out to be higher than expected or higher than that provisions are carried for. Cost increases have different causes, such as non-recurring regulatory change costs, or recurring inflation increases. This risk can be mitigated only partially.

Underwriting Risk - Revision

Revision risk applies to annuity insurances where the benefits ‘could increase because of changes in inflation, the legal environment or the state of health of the person insured.’ AEL’s insurances do not provide such benefits; therefore, this risk is not applicable.

Underwriting Risk - Lapse

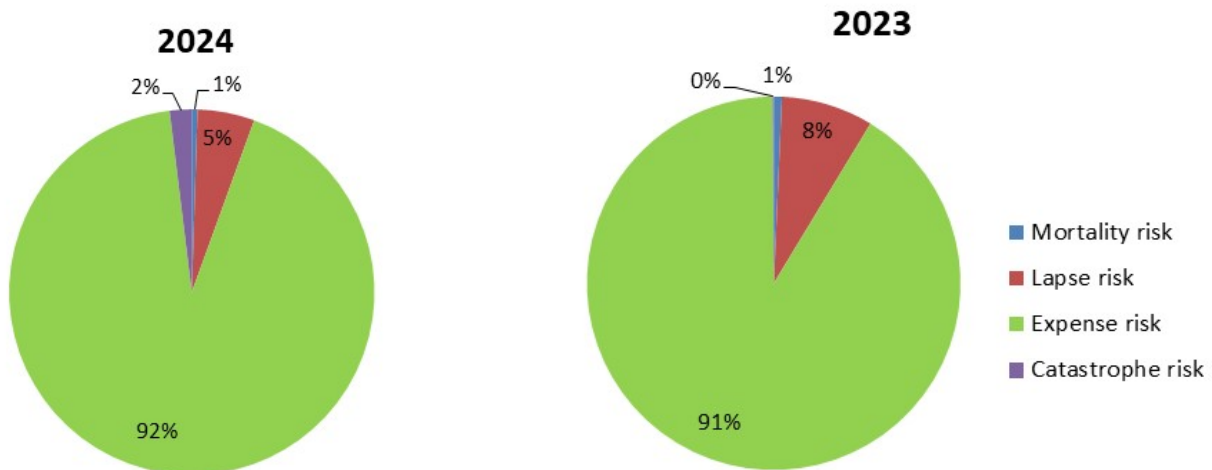
Lapse risk arises mainly due to the loss of future income if lapses are higher than expected. Lapse risk can be driven by external events such as an economic recession or by internal factors such as poor customer service delivery.

Underwriting Risk - Catastrophe

In some territories AEL is exposed to this risk, for example due to mass accidents. This risk is generally remote.

C.1. Quantitative review of risk profile

The graphs below show the Underwriting Risk profile of the Company using the risk capital requirements calculated by the standard formula as at 31 December of the current and prior year.



Most of the Underwriting risk SCR is made up by expense risk (life). This is due to the fact that the small portfolio needs to carry the cost to operate the legal entity. Since AEL is in run-off, it carries a provision for all costs associated with that run-off. Stressing that provision has a relatively large impact. Given the decrease of the insurance portfolio, the relative share of the expenses provision has increased compared to last year.

The second largest contributor is lapse risk. This is the risk related to losing profitable business: cancelling policies for which future premiums exceed future expected claims and single premium policies being cancelled early, requiring those single premiums being partly refunded (and those refund values exceed the future expected claims). Given the further run-off of the portfolio, the relative share of Lapse Risk has decreased compared to last year.

The shares of the other risks have not changed materially.

C.1.3 Risk mitigation Techniques

The below table sets out the techniques used for mitigating (material) risks and the processes used for monitoring their continued effectiveness.

As AEL is a business in run-off, it can no longer make changes to its risk profile by adjusting underwriting. Instead, AEL will periodically consider whether to manage risk in-house (at own cost and own capital strain) versus placing such risks externally, for example via reinsurance.

Risk Category	Key Controls and Risk Mitigation Techniques
Underwriting risk - Life reserve risk (mortality)	<ul style="list-style-type: none"> ▪ Regular experience investigations and monthly review of programs avoid insufficient technical provisions. ▪ Emerging risk reviews focus on market developments that may prove a program under-reserved. ▪ If and when deemed required, concluding a stop loss reinsurance agreement.
Underwriting risk - Disability & Morbidity risk (SLT Health)	<ul style="list-style-type: none"> ▪ Regular experience investigations, and industry analysis, to support best estimate assumptions and identify trends. ▪ Emerging risk reviews focus on market developments that may prove a program under-reserved. ▪ If and when deemed required, concluding a stop loss reinsurance agreement.
Expense Risk	<ul style="list-style-type: none"> ▪ Stringent regime of budgetary control, monitored as part of the annual planning and quarterly reporting cycles. ▪ Outsourcing strategy keeps costs variable.
Lapse Risk	<ul style="list-style-type: none"> ▪ Regular experience investigations to support best estimate assumptions and identify trends. ▪ Stringent management of customer service delivery and adherence to treating customers fairly (TCF) principles.
Catastrophe Risk	<ul style="list-style-type: none"> ▪ Given the low actual exposure to this risk (as the population of insured persons is spread across the countries), no specific mitigation measures are in place.

C.2 Market Risk

C.2.1 Qualitative review of risk profile

Market risk emerges in different ways. It arises directly, because of interest rate and spread movements or exchange rate movements but also due to a loss of funds if a debtor is not able to repay its debt. This indirect risk is credit risk is treated in section C.3.

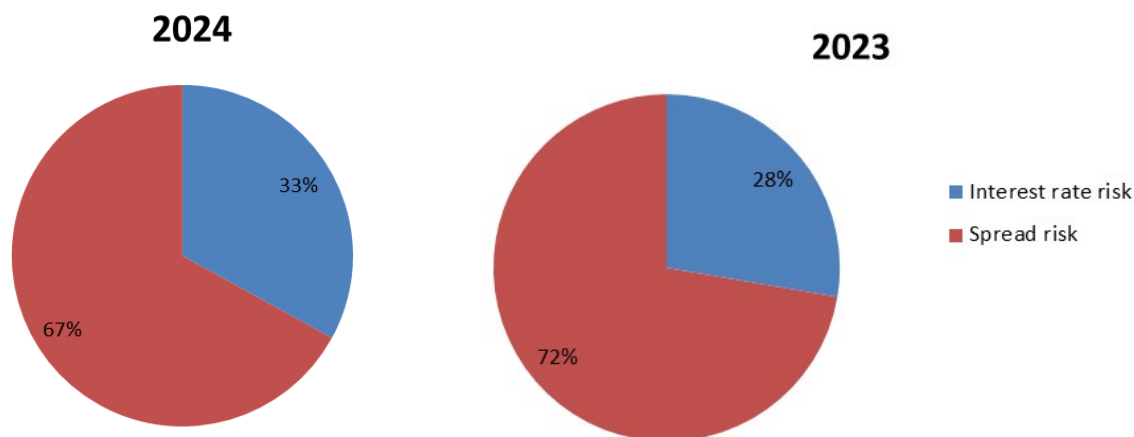
AEL does not seek market risk to increase revenue or profit but rather incurs it as a consequence of having to invest funds to cover policyholder liabilities and hold capital for regulatory purposes.

Included within market risk are:

Risk category	Description
Interest Rate Risk	Interest risk is inherently present. Given that a major part of AEL's assets are bonds, interest fluctuations will impact these assets' values. Fluctuations in interest rates also affect liabilities' values. The overall impact of interest risk is therefore depending on how well the assets and liabilities are matched.
Spread Risk	AEL invests in corporate bonds through ETFs and is therefore exposed to spread risk.
Currency Risk	Currency risk emerges when currencies lose value compared to the Euro, the companies reporting currency. AEL only operates in the European Union, and therefore its exposure to currency risk is limited.
Concentration Risk	The Company's investment in ETFs may hold positions that exceed the standard model limits for concentration.
Equity risk	AEL had no exposure to equity risk as at 31 December 2023.
Property Risk	AEL had no exposure to property risk as at 31 December 2023.

C.2.2 Quantitative review of risk profile

The graphs below show the market risk profile of the Company using the risk capital requirements calculated by the standard formula as at 31 December of the current and prior year.



At year-end 2024 the net interest position is positive. In the current positive interest-rate environment, this results in an exposure to increasing interest rates. This was also the case at previous year-end.

Given the diversification in the portfolio, concentration risk does not apply. Currency risk is ignorable as AEL only operates in Euro-countries and invests in Euro-denominated bonds.

C.2.3 Risk mitigation

The below table sets out the techniques used for mitigating risks and the processes used for monitoring their continued effectiveness.

Risk Category	Key Controls and Risk Mitigation Techniques
Interest Risk	Matching of assets and liabilities to reduce the impact of adverse interest rate movements.
Spread risk	Bond portfolio with high average credit rating. Only investment grade securities allowed.
Concentration Risk	Investment in ETFs without investment that breach a concentration limit.
Currency Risk	Not applicable.

The company does not use any derivatives or other specific risk mitigation instruments to manage its market risk exposure.

C.2.5 Assets invested in accordance with the Prudent person principle.

C.2.5.1 Prudent Person Principle

The Company holds assets to back its various liabilities and its shareholder funds. Through pro-active investment management the Company can achieve an appropriate level of investment return. Achieving an appropriate level of investment return is not the sole aim though, as the Company needs to keep the risks within its risk tolerance limits, which are set with the aim to achieve pay outs in line with policyholders' reasonable expectations.

The Company has a limited risk appetite to incur losses on investments that are held to cover policyholder liabilities. These investments are held to match the best estimate cash outflows and returns on funds are of lower priority (since the liabilities do not hold guarantees and are discounted against the EIOPA curve).

The Company has a higher risk appetite for invested shareholder funds. For these, return on investment has a higher priority and with that comes a more positive risk appetite towards credit and spread risk.

Finally, the Company has a limited risk appetite for liquidity risk and concentration risk. Subsequently, when setting the asset mix and determining suitable investments it is important to maintain a minimum level of cash holdings and to ensure that the company does not invest too much with a single counterparty, for which strict limits exist.

C.2.5.2 Investment management

The Board of Directors is responsible for ensuring that the controls for investment management are appropriate and effective. As such the board is responsible for the approval of the Investment policy and oversight of its operation. This includes signing off major changes in the approach used for investment management. At AEL, also the Supervisory Board signs off the Investment policy.

C.3 Credit Risk

C.3.1 Qualitative review of risk profile

Two types of exposures are distinguished.

Type 1

The Company holds some amounts of funds with banks in The Netherlands. Counterparty default risk would emerge if one or more of these banks (which are Globally Systemic Important Banks) would not be able to repay the balances held.

The Company has placed only insignificant reinsurance with certain reinsurers.

Type 2

The company has small amounts due from intermediaries.

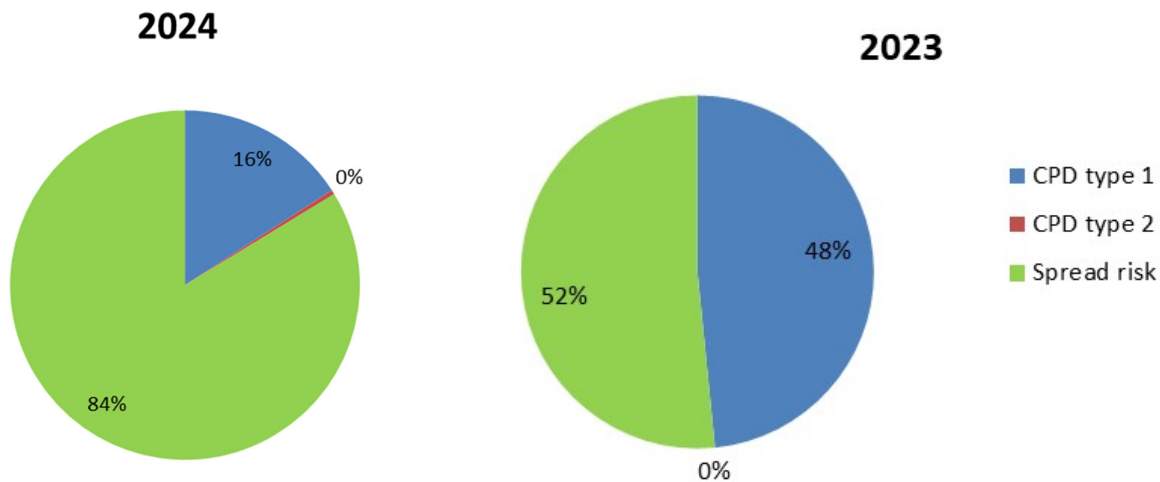
Spread risk, reflecting credit risk on the corporate bond portfolio, is treated in section C.2.

C.3.2 Quantitative review of risk profile

The graphs below show the credit risk profile of the Company using the risk capital requirements calculated by the standard formula as at 31 December of the current and prior year.

The capital is held mostly for Spread risk, as most of AEL’s funds are invested in bonds (through exchange traded funds) or money markets. Type 1 exposure decreased significantly by reducing the amounts of cash at bank and investing excess liquidity in money market funds.

Type 2 exposure is small as the portfolio is in run-off.



C.3.3 Risk mitigation

The below table sets out the techniques used for mitigating risks and the processes used for monitoring their continued effectiveness.

Risk Category	Key Controls and Risk Mitigation Techniques
Credit and counterparty default	<ul style="list-style-type: none"> ▪ Operation of controls which limit the level of exposure to any single counterparty and impose limits on exposure by credit rating. ▪ Bank accounts held with GSIBs.
Spread	<ul style="list-style-type: none"> ▪ Bond portfolio with high average credit rating. Only investment grade securities allowed.

C.4 Liquidity Risk

Liquidity risk is defined as the risk that the company will have insufficient liquid assets available to meet liabilities as they become due.

C.4.1 Qualitative review of risk profile

Liquidity risk arises when cash outflows to policyholders or pay-out patterns deviate from expectations, or when cash outflows are not properly matched by cash inflows. The company holds all its invested assets in liquid instruments (cash at bank, money market funds and exchange traded bonds) which are directly or almost directly available, therefore liquidity risk is not considered a major residual risk.

Other liquidity issues could arise from counterparty default risk (see section C.3).

C.4.2 Quantitative review of risk profile

Given the very large excess of liquid investments over policyholder liabilities, no further details are provided.

C.4.3 Risk mitigation

The below table sets out the techniques used for mitigating risks and the processes used for monitoring their continued effectiveness.

Risk Category	Key Controls and Risk Mitigation Techniques
Liquidity	<ul style="list-style-type: none"> ▪ Funds held at GSIB banks with limits per institution. ▪ Investment policy prescribes investment in liquid assets. ▪ Quarterly cash flow forecasts to anticipate funding requirements over the following three months and considering wider funding requirements from the business planning and/or group dividend payments. ▪ Weekly / monthly / quarterly treasury reporting showing the liquid assets held and how these compare to the minimum threshold set in the Investment policy.

C.4.5 Expected Profit in Future Premiums

As required by Article 260(2) of the S2 Directive, the company calculated the amount of expected profit in future premiums included in the best estimate technical provisions which is nil, due to no premium of significance being received post 31 December.

C.5 Operational Risk

C.5.1 Qualitative review of risk profile

The company typically carries the same operational risks as most insurers. Operational risks manifest themselves in a wide variety of forms. The company is considered to be most exposed to IT-related risks (continuity of processing, data security, data privacy), regulation related risks (changes in regulation that increase the cost base or changes in regulations that are applied retro-actively and for which no means of compensation exists).

Operational risks are assessed periodically and captured in a risk register.

C.5.2 Quantitative review of risk profile

In the first section of this chapter C, a graph shows the distribution of the four main risk groups that are part of the BSCR in addition to operational risk, calculated by the standard formula as at 31 December of the current period. This graph shows that operational risk is, from a quantitative perspective, relatively insignificant in the total risk profile of the Company. Whilst the company is exposed to many operational risks and has quantified the (external) cost of these scenarios, these costs do not exceed the capital charges for the other risk categories defined in the standard model.

C.5.3 Risk mitigation

The below table sets out the techniques used for mitigating risks and the processes used for monitoring their continued effectiveness.

Risk Category	Key Controls and Risk Mitigation Techniques
Operational risk	<ul style="list-style-type: none"> ▪ Close oversight of the performance and risk management of (IT-) service providers. ▪ SOX review of major IT applications. ▪ Ongoing monitoring and testing of business continuity plans. ▪ (Preventive) health and safety measures are in place. ▪ Remote work facilities.

C.6 Other material risks

In 2024, following elections, the US administration has imposed, and other countries counter-imposed, a number of import tariffs. These do not impact the company's operations directly but could cause higher than average movements in the capital markets, which would influence the valuation of the investment portfolio or cause longer-term higher than average levels of inflation. AEL's insured benefits are not affected by inflation but whilst its expense provisions are considered sufficiently robust, it should be recognised that a prolonged period of higher than usual inflation would impact the company at some point in time.

C.7 Any other disclosures

C.7.1 Risk mitigation techniques and monitoring

Risk assessment

Section B.3.1 sets out the Risk management framework of the Company and section B.3.2 explains how the Company carries out its Own Risk and Solvency Assessment (ORSA). This provides the framework by which individual risks are identified, assessed, monitored and managed. As part of this framework, the Company quantifies the capital impact of different risks by:

- Determining the risk capital requirements using the standard formula as part of the quarterly financial reporting cycle.
- Performing additional stress and scenario testing to support the ORSA.

An assessment is carried out on an annual basis to confirm that the standard formula remains appropriate for establishing the regulatory capital requirements for the Company. This assessment is approved by the Board of Directors.

C.7.2 Stress testing and sensitivity analysis

C.7.2.1 Overview

The Company uses the standard formula to determine its regulatory capital requirements, and these are calculated and reported on a quarterly basis. As part of the Own Risk and Solvency Assessment (ORSA) the Company performs a forward-looking assessment of its ability to meet the regulatory capital requirements under a range of stresses and scenarios.

Full details of the stresses and scenarios, the methodologies used and the results are included in the ORSA report that is submitted to DNB.

C.7.2.2 Methodology

The stress and scenario tests have been carried out with a base date of 31 December 2024, forecasted from 30 June 2024.

In quantifying the financial impact of each stress, it is assumed that each stress occurs immediately after the year-end, i.e., as at 1 January 2025.

After applying the stress, risk capital is recalculated in accordance with the standard formula in order to re-establish the regulatory capital requirements.

C.7.2.3 Outcomes from the stress and scenario testing

Each stress and scenario test was performed using the methodology described above, and the Solvency ratio was compared to the base financial position. The analysis concluded that the amount of available capital as at 31 December 2024 is sufficient to withstand the stresses and scenarios adopted by the Board of Directors.

D Valuation for Solvency purposes

This section of the Solvency and Financial Condition Report shows how the assets and liabilities of the Company have been valued, both for solvency and statutory reporting purposes. The below table summarises the Own funds (as measured on a solvency basis) and net assets (as measured in the statutory financial statements) and provides a reference where further information is provided.

		Solvency 2	Statutory
€'000			
Assets	Section D.1	8,615	8,615
Technical provisions	Section D.2	-1,871	-1,871
Other liabilities	Section D.3	-702	-702
Own funds / net assets		6,042	6,042

D.1 Assets

The table below shows each class of asset with Solvency 2 value and the statutory account value.

	Section	Solvency II value	Statutory accounts value
		C0010	C0020
Assets			
R0010 Goodwill		-	-
R0020 Deferred acquisition costs		-	-
R0030 Intangible assets		-	-
R0040 Deferred tax assets		-	-
R0050 Pension benefit surplus		-	-
R0060 Property, plant & equipment held for own use		-	-
R0070 Investments (other than assets held for index-linked and unit-linked contracts)		7,933,331	7,933,331
R0080 Property (other than for own use)		-	-
R0090 Holdings in related undertakings, including participations		-	-
R0100 Equities		-	-
R0130 Bonds		-	-
R0140 Government Bonds		-	-
R0150 Corporate Bonds		-	-
R0160 Structured notes		-	-
R0170 Collateralised securities		-	-
R0180 Collective Investments Undertakings	D.1.1	7,933,331	7,933,331
R0190 Derivatives		-	-
R0200 Deposits other than cash equivalents		-	-
R0210 Other investments		-	-
R0220 Assets held for index-linked and unit-linked contracts		-	-
R0230 Loans and mortgages		-	-
R0240 Loans on policies		-	-
R0250 Loans and mortgages to individuals		-	-
R0260 Other loans and mortgages		-	-
R0270 Reinsurance recoverables from:		-	-
R0280 Non-life and health similar to non-life		-	-
R0290 Non-life excluding health		-	-
R0300 Health similar to non-life		-	-
R0310 Life and health similar to life, excluding health and index-linked and unit-linked	D.2	-	-
R0320 Health similar to life		-	-
R0330 Life excluding health and index-linked and unit-linked		-	-
R0340 Life index-linked and unit-linked		-	-
R0350 Deposits to cedants		-	-
R0360 Insurance and intermediaries receivables	D.1.2	-	-
R0370 Reinsurance receivables	D 1.3	39,774	39,774
R0380 Receivables (trade, not insurance)	D 1.4	11,162	11,162
R0390 Own shares (held directly)		-	-
R0400 Amounts due in respect of own fund items or initial fund called up but not yet paid in		-	-
R0410 Cash and cash equivalents	D 1.5	630,936	630,936
R0420 Any other assets, not elsewhere shown		-	-
R0500 Total assets		8,615,203	8,615,203

D.1.1 Collective Investments Undertakings

Collective Investments Undertakings (of which AEL invests in exchange traded funds and money market funds) are measured at market value.

D.1.2 Insurance and Intermediaries receivables

Insurance and intermediary receivables are measured at the undiscounted amount of the cash or other consideration expected to be received, net of any allowance for impairment.

D.1.3 Reinsurance receivables

Reinsurance receivables are measured at the undiscounted amount of the cash or other consideration expected to be received, net of any allowance for impairment.

D.1.4 Receivables trade (not insurance)

Trade receivables are measured at the undiscounted amount of the cash or other consideration expected to be received, net of any allowance for impairment.

D.1.5 Cash and cash equivalents

Cash and cash equivalents include cash in hand, deposits held at call with banks and other short-term highly liquid investments and are measured at fair value. Highly liquid is defined as having a short maturity of three months or less at acquisition.

D.2 Technical provisions

The following table shows the net technical provisions under Solvency 2 and the statutory financial statements. In the latter, the net technical provisions are presented as a provision for unearned premiums of € 1,586,291 and a provision for claims outstanding of € 284,499, adding up to € 1,870,789.

D.2.1 Bases, methods, and main assumptions

Under Solvency 2, liabilities are valued at the amount for which they could be transferred between two knowledgeable parties.

	Solvency 2 value	Statutory accounts value
Liabilities		
Technical provisions - life (excluding index-linked and unit-linked)	1,870,789	1,870,789
Technical provisions - health (similar to life)	9	
Technical provisions calculated as a whole	-	
Best Estimate	8	
Risk margin	1	
Technical provisions - life (excluding health and index-linked and unit-linked)	1,870,781	
Technical provisions calculated as a whole	-	
Best Estimate	1,752,091	
Risk margin	118,689	
Assets		
Reinsurance recoverables from:	-	-
Life and health similar to life, excluding health and index-linked and unit-linked	-	-
Health similar to life	-	
Life excluding health and index-linked and unit-linked	-	
Net provisions	1,870,789	1,870,789

Technical Provisions are defined as the sum of a best estimate and a risk margin. The best estimate is the probability weighted mean average of all future cash-flows and the risk margin represents the cost of providing the solvency capital required to support these best estimate liabilities.

The following principles were applied for compiling the Solvency 2 technical provisions:

- The liabilities valued in the technical provisions are those associated with existing contracts at the valuation date.
- The provisions are computed using policy by policy life valuation models for the premium provision.
- The expected cash-flow are projected for each policy for each future month until all existing contracts have expired.
- Expenses are projected similar to claim cash flows.
- The claims provisions mainly represent claims in course of payment (plus an allowance for claims which have been incurred but which have not yet been reported to AEL). These claims provision include an allowance for unallocated loss adjustment expenses.
- Gross cash-flows are calculated separately from reinsurance cash flows, to recognize that there could be significant differences in the timing of these cash flows.
- A separate run-off provision is maintained to allow for the orderly run-off of the portfolio.
- The EIOPA yield curve is used to discount future cash flows (no VA or MA applied).

D.2.2 Level of uncertainty

There are several areas of uncertainty in the calculation of the technical provisions. Reserving is carried out by using actuarial methods of projecting the paid (or known) claims to estimate the reserve required to pay claims in course of payment (plus an adjustment for claims incurred but not yet reported to AEL). These methods are generally based on the assumption that claim durations and reporting delays can be predicted based on historic experience. There is uncertainty in this due to changes in handling processes and mortality trends for older demographics within the policy set.

The main uncertainties concern:

- Expense developments. Higher than expected inflation or industry specific costs, such as those of regulation, could negatively impact the company's future financial position.
- Lapse patterns. Early surrenders lead to premium reimbursements and loss of income.

D.2.3 Differences between Solvency 2 and the statutory financial statements

There are no differences between Solvency 2 and the statutory financial statements.

D.2.3.1 Premium and claim provision

The Premium and claim provisions are based on the probability weighted average of future cash flows related to the policies, within contract boundaries.

D.2.3.2 Risk Margin

Under Solvency 2 a risk margin is determined using a cost of capital approach which involves calculating the cost of holding the SCR per Standard formula calculation at each future time period until the technical provisions at the reporting date have run off. The amounts are then discounted back to the current time period. The calculation excludes new business and market risk. AEL determines its risk margin by projecting the SCR in line with the run off of best estimate liabilities (method 2).

D.2.3.3 Discounting

The best estimate technical provisions are discounted against the EIOPA provided curve (no VA and no MA).

D.2.4 Use of Long-term guarantee package

- AEL has not applied the matching adjustment referred to in Article 77b of Directive 2009/138/EC.
- AEL has not used the volatility adjustment referred to in Article 77d of Directive 2009/138/EC

- AEL has not applied the transitional risk-free interest rate-term structure referred to in Article 308c of Directive 2009/138/EC.
- AEL has not applied the transitional deduction referred to in Article 308d of Directive 2009/138/EC.

D.2.5 Reinsurance

Reinsurance recoverables represent the net discounted cash flow expected to be received from AEL's reinsurers. Until recently, AEL has only been using facultative reinsurances, primarily quota share, to cede risk on particular programs, all of which have now completed their runoff. As a consequence, the ceded share of AEL's technical provision is nil at the reporting date.

D.2.6 Material changes in the relevant assumptions made in the calculation of technical provisions

No material changes were made compared to the prior period.

D.3 Other liabilities

The table below shows the other liabilities as per 31 December:

		Solvency 2	Statutory
€'000			
Insurance & Intermediary payables	Section D.3.1	649	649
Reinsurance payables		4	4
Payables (trade)	Section D.3.2	49	49
Other Liabilities		702	702

D.3.1 Insurance and Intermediaries payables

Insurance and intermediary payables are measured at the undiscounted amount of the cash or other consideration expected to be paid.

D.3.2 Payables (trade, not insurance)

Payables are measured at the undiscounted amount of the cash or other consideration expected to be paid.

D.4 Alternative methods for valuation

No alternative methods of valuation were used.

D.5 Any other disclosures

None.

E Capital management

E.1 Own funds

E.1.1 Capital Management Policy

AEL's Capital Management policy, which is approved by the Board of Directors and the Supervisory Board, describes the company's capital requirements. Besides the aim to always fulfil regulatory capital requirements, the company has also determined internal buffers on top of that regulatory capital.

E.1.2 Analysis of Own Funds

The table below provides an overview of movements in and composition of Own Funds.

	31-Dec-23	Mvmt in year	Transfers	31-Dec-24
€'000				
Tier 1:				
Share capital	5,440	-	-	5,440
Share premium reserve	-	-	-	-
Total ordinary share capital	5,440	-	-	5,440
Reconciliation reserve before deductions	949	153	-	1,102
Dividends	-	-500	-	-500
Restricted own funds (ring fenced funds)	-	-	-	-
Total reconciliation reserve	949	-347	-	602
Deductions for participations in financial institutions	-	-	-	-
Total tier 1 own funds after deductions	6,389	-347	-	6,042
Eligible own funds to cover SCR:				
Tier 1	6,389	-347	-	6,042
Tier 2	-	-	-	-
Tier 3	-	-	-	-
	6,389	-347	-	6,042
SCR	652	-99		553
AMCR	4,000	-		4,000
Solvency ratio	160	-9%		151%

In 2024, the Company paid a Euro 500,000 dividend to its shareholder.

E.1.3 Differences between equity in the statutory financial statements and excess of assets over liabilities as calculated for solvency purposes

There are no differences between Solvency 2 and the statutory financial statements.

E.1.3 Items deducted from Own Funds

No items require deduction of Own funds.

E.2 Solvency Capital Requirement and Minimum Capital Requirement

The SCR as at 31 December amounts to:

	2024	2023
€'000		
Market Risk	355	305
Counterparty Default Risk	62	267
Non-Life Underwriting Risk	-	-
Life Underwriting Risk	292	320
Health Underwriting Risk	0	0
Sum of risk modules	<u>708</u>	<u>892</u>
Diversification between risk modules	<u>-173</u>	<u>-260</u>
Basic SCR	<u>535</u>	<u>631</u>
Operational Risk	17	23
Loss-absorbing capacity of deferred taxes	-	-
SCR	553	655

No undertaking specific parameters or simplifications are applied. No capital add-ons have been imposed by the DNB.

The MCR has been calculated using the linear calculation as set out in the Solvency 2 Directive.

	Row	2024	2023
€'000			
Linear MCR	R0300	44	54
SCR	R0310	553	655
MCR cap	R0320	249	294
MCR floor	R0330	138	163
Combined MCR	R0340	138	163
Absolute floor of the MCR	R0350	4,000	4,000
Minimum Capital Requirement	R0400	4,000	4,000

Given the above, AEL applies the AMCR of Euro 4.0 million.

Details of the SCR and MCR calculations, including the MCR inputs and floor, are provided in the appended S.25.01 and S.28.01.

E.3 Use of the duration-based equity risk sub-module in the calculation of the Solvency Capital Requirement

The company does not make use of the duration-based equity risk sub-module in the calculation of the SCR.

E.4 Differences between the standard formula and any internal models used

The company does not use an internal model.

E.5 Non-compliance with the minimum capital requirement and significant non-compliance with the solvency capital requirement

The Company has met its SCR and MCR at all times during the year.

E.6 Any other disclosures

There is no other information regarding the capital management of the Company that is deemed material to report.

F Quantitative Reporting Templates

P.02.01.02 - Balance sheet

		Solvency II value
	Assets	C0010
R0030	Intangible assets	0
R0040	Deferred tax assets	0
R0050	Pension benefit surplus	0
R0060	Property, plant & equipment held for own use	0
R0070	Investments (other than assets held for index-linked and unit-linked contracts)	7,933
R0080	Property (other than for own use)	0
R0090	Holdings in related undertakings, including participations	0
R0100	Equities	0
R0110	Equities - listed	0
R0120	Equities - unlisted	0
R0130	Bonds	0
R0140	Government Bonds	0
R0150	Corporate Bonds	0
R0160	Structured notes	0
R0170	Collateralised securities	0
R0180	Collective Investments Undertakings	7,933
R0190	Derivatives	0
R0200	Deposits other than cash equivalents	0
R0210	Other investments	0
R0220	Assets held for index-linked and unit-linked contracts	0
R0230	Loans and mortgages	0
R0240	Loans on policies	0
R0250	Loans and mortgages to individuals	0
R0260	Other loans and mortgages	0
R0270	Reinsurance recoverables from:	0
R0280	Non-life and health similar to non-life	0
R0290	Non-life excluding health	0
R0300	Health similar to non-life	0
R0310	Life and health similar to life, excluding health and index-linked and unit-linked	0
R0320	Health similar to life	0
R0330	Life excluding health and index-linked and unit-linked	0
R0340	Life index-linked and unit-linked	0
R0350	Deposits to cedants	0
R0360	Insurance and intermediaries receivables	0
R0370	Reinsurance receivables	40
R0380	Receivables (trade, not insurance)	11
R0390	Own shares (held directly)	0
R0400	Amounts due in respect of own fund items or initial fund called up but not yet paid in	0
R0410	Cash and cash equivalents	631
R0420	Any other assets, not elsewhere shown	0
R0500	Total assets	8,615

Liabilities

		Solvency II value
		C0010
R0510	Technical provisions – non-life	0
R0520	Technical provisions – non-life (excluding health)	0
R0530	TP calculated as a whole	0
R0540	Best Estimate	0
R0550	Risk margin	0
R0560	Technical provisions - health (similar to non-life)	0
R0570	TP calculated as a whole	0
R0580	Best Estimate	0
R0590	Risk margin	0
R0600	Technical provisions - life (excluding index-linked and unit-linked)	1,871
R0610	Technical provisions - health (similar to life)	0
R0620	TP calculated as a whole	0
R0630	Best Estimate	0
R0640	Risk margin	0
R0650	Technical provisions – life (excluding health and index-linked and unit-linked)	1,871
R0660	TP calculated as a whole	0
R0670	Best Estimate	1,752
R0680	Risk margin	119
R0690	Technical provisions – index-linked and unit-linked	0
R0700	TP calculated as a whole	0
R0710	Best Estimate	0
R0720	Risk margin	0
R0740	Contingent liabilities	0
R0750	Provisions other than technical provisions	0
R0760	Pension benefit obligations	0
R0770	Deposits from reinsurers	0
R0780	Deferred tax liabilities	0
R0790	Derivatives	0
R0800	Debts owed to credit institutions	0
R0810	Financial liabilities other than debts owed to credit institutions	0
R0820	Insurance & intermediaries payables	649
R0830	Reinsurance payables	4
R0840	Payables (trade, not insurance)	49
R0850	Subordinated liabilities	0
R0860	Subordinated liabilities not in Basic Own Funds	0
R0870	Subordinated liabilities in Basic Own Funds	0
R0880	Any other liabilities, not elsewhere shown	0
R0900	Total liabilities	2,573
R1000	Excess of assets over liabilities	6,042

P.04.05.21 - Premiums, claims and expenses by country

R1010

R1020 Gross Written Premium
R1030 Gross Earned Premium
R1040 Claims incurred
R1050 Gross Expenses Incurred

Home Country	Top 5 countries (by amount of gross premiums written) - life obligations					
	C0002.01	C0002.02	C0002.03	C0002.04	C0002.05	
	BE	IT				
	C0030	C0040.01	C0040.02	C0040.03	C0040.04	C0040.05
	84	229	0	0	0	0
	116	318	0	0	0	0
	145	54	29	0	0	0
	125	158	0	0	0	0

P.05.01.02.02 - Premiums, claims and expenses by line of business
Premiums written

R1410 Gross
R1420 Reinsurers' share
R1500 Net

Premiums earned

R1510 Gross
R1520 Reinsurers' share
R1600 Net

Claims incurred

R1610 Gross
R1620 Reinsurers' share
R1700 Net

R1900

Expenses incurred

R2510

Balance - other technical expenses/income

R2600

Total expenses

R2700

Total amount of surrenders

Line of Business for: life insurance obligations		Total
Health insurance	Other life insurance	
C0210	C0240	C0300
0	313	313
0	0	0
0	313	313
0	433	434
0	0	0
0	433	434
29	199	228
16	0	16
13	199	212
0	283	283
		0
		283
0	0	0

P.12.01.02 - Life and Health SLT Technical Provisions

R0010 **Technical provisions calculated as a whole**
Total Recoverables from reinsurance/SPV and Finite Re
R0020 after the adjustment for expected losses due to counterparty default associated to TP as a whole
Technical provisions calculated as a sum of BE and RM
Best Estimate
R0030 **Gross Best Estimate**
R0080 Total Recoverables from reinsurance/SPV and Finite Re after the adjustment for expected losses due to counterparty default
R0090 Best estimate minus recoverables from reinsurance/SPV and Finite Re - total
R0100 **Risk Margin**
R0200 **Technical provisions - total**

	Other life insurance		Total (Life other than health insurance, including Unit-Linked)	Health insurance (direct business)			Total (Health similar to life insurance)	
	Contracts without options and guarantees	Contracts with options or guarantees		Contracts without options and guarantees	Contracts with options or guarantees			
	C0060	C0070	C0080	C0150	C0160	C0170	C0180	C0210
R0010	0			0	0			0
R0020	0			0	0			0
R0030		1,752	0	1,752		0	0	0
R0080		0	0	0		0	0	0
R0090		1,752	0	1,752		0	0	0
R0100	119			119	0			0
R0200	1,871			1,871	0			0

	Basic own funds before deduction for participations in other financial sector as foreseen in article 68 of Delegated Regulation 2015/35
R0010	Ordinary share capital (gross of own shares)
R0030	Share premium account related to ordinary share capital
R0040	Initial funds, members' contributions or the equivalent basic own - fund item for mutual and mutual-type undertakings
R0050	Subordinated mutual member accounts
R0070	Surplus funds
R0090	Preference shares
R0110	Share premium account related to preference shares
R0130	Reconciliation reserve
R0140	Subordinated liabilities
R0160	An amount equal to the value of net deferred tax assets
R0180	Other own fund items approved by the supervisory authority as basic own funds not specified above
	Own funds from the financial statements that should not be represented by the reconciliation reserve and do not meet the criteria to be classified as Solvency II own funds
R0220	Own funds from the financial statements that should not be represented by the reconciliation reserve and do not meet the criteria to be classified as Solvency II own funds
	Deductions
R0230	Deductions for participations in financial and credit institutions
R0290	Total basic own funds after deductions
	Ancillary own funds
R0300	Unpaid and uncalled ordinary share capital callable on demand
R0310	Unpaid and uncalled initial funds, members' contributions or the equivalent basic own fund item for mutual and mutual - type undertakings, callable on demand
R0320	Unpaid and uncalled preference shares callable on demand
R0330	A legally binding commitment to subscribe and pay for subordinated liabilities on demand
R0340	Letters of credit and guarantees under Article 96(2) of the Directive 2009/138/EC
R0350	Letters of credit and guarantees other than under Article 96(2) of the Directive 2009/138/EC
R0360	Supplementary members calls under first subparagraph of Article 96(3) of the Directive 2009/138/EC
R0370	Supplementary members calls - other than under first subparagraph of Article 96(3) of the Directive 2009/138/EC
R0390	Other ancillary own funds
R0400	Total ancillary own funds
	Available and eligible own funds
R0500	Total available own funds to meet the SCR
R0510	Total available own funds to meet the MCR
R0540	Total eligible own funds to meet the SCR
R0550	Total eligible own funds to meet the MCR
R0580	SCR
R0600	MCR
R0620	Ratio of Eligible own funds to SCR
R0640	Ratio of Eligible own funds to MCR

Total	Tier 1 - unrestricted	Tier 1 - restricted	Tier 2	Tier 3
C0010	C0020	C0030	C0040	C0050
5,440	5,440		0	
0	0		0	
0	0		0	
0		0	0	0
0	0			
0		0	0	0
0		0	0	0
602	602			
0		0	0	0
0		0	0	0
0				0
0		0	0	0
0				0
0		0	0	0
0				0
0		0	0	0
0				0
0		0	0	0
0				0
0		0	0	0
0				0
0		0	0	0
0				0
6,042	6,042	0	0	0
0			0	
0			0	
0			0	0
0			0	0
0			0	0
0			0	0
0			0	0
0			0	0
0			0	0
6,042	6,042	0	0	0
6,042	6,042	0	0	
6,042	6,042	0	0	0
6,042	6,042	0	0	
553				
4,000				
10.93				
1.51				



Reconciliation reserve
 R0700 Excess of assets over liabilities
 R0710 Own shares (held directly and indirectly)
 R0720 Foreseeable dividends, distributions and charges
 R0730 Other basic own fund items
 R0740 Adjustment for restricted own fund items in respect of matching adjustment portfolios and ring fenced funds
 R0760 **Reconciliation reserve**
Expected profits
 R0770 Expected profits included in future premiums (EPIFP) - Life business
 R0780 Expected profits included in future premiums (EPIFP) - Non- life business
 R0790 **Total Expected profits included in future premiums (EPIFP)**

C0060				
6,042	-			
0	-			
0	-			
5,440	-			
0	-			
602	-			
	-			
0	-			
0	-			
0	-			

P.25.01.21 - Solvency Capital Requirement - for undertakings on Standard Formula

		Gross solvency capital requirement
		C0110
R0010	Market risk	355
R0020	Counterparty default risk	62
R0030	Life underwriting risk	292
R0040	Health underwriting risk	0
R0050	Non-life underwriting risk	-
R0060	Diversification	-173
R0070	Intangible asset risk	0
R0100	Basic Solvency Capital Requirement	553
Calculation of Solvency Capital Requirement		C0100
R0130	Operational risk	17
R0140	Loss-absorbing capacity of technical provisions	-
R0150	Loss-absorbing capacity of deferred taxes	-
R0160	Capital requirement for business operated in accordance with Art. 4 of Directive 2003/41/EC	-
R0200	Solvency capital requirement excluding capital add-on	553
R0210	Capital add-on already set	-
R0211	of which, capital add-ons already set - Article 37 (1) Type a	-
R0212	of which, capital add-ons already set - Article 37 (1) Type b	-
R0213	of which, capital add-ons already set - Article 37 (1) Type c	-
R0214	of which, capital add-ons already set - Article 37 (1) Type d	-
R0220	Solvency capital requirement	553
Other information on SCR		-
R0400	Capital requirement for duration-based equity risk sub-module	-
R0410	Total amount of Notional Solvency Capital Requirement for remaining part	-
R0420	Total amount of Notional Solvency Capital Requirements for ring fenced funds	-
R0430	Total amount of Notional Solvency Capital Requirement for matching adjustment portfolios	-
R0440	Diversification effects due to RFF nSCR aggregation for article 304	-
Approach to tax rate		Yes/No
R0590	Approach based on average tax rate	C0109
Calculation of loss absorbing capacity of deferred taxes		LAC DT
		C0130
R0600	DTA	-
R0610	DTA carry forward	-
R0620	DTA due to deductible temporary differences	-
R0630	DTL	-
R0640	LAC DT	-
R0650	LAC DT justified by reversion of deferred tax liabilities	-
R0660	LAC DT justified by reference to probable future taxable economic profit	-
R0670	LAC DT justified by carry back, current year	-
R0680	LAC DT justified by carry back, future years	-
R0690	Maximum LAC DT	-

P.28.01.01 - Minimum Capital Requirement - Only life or only non-life insurance or reinsurance activity
Linear formula component for life insurance and reinsurance obligations

R0200	MCRL Result	C0040 44		
			Net (of reinsurance/SPV) best estimate and TP calculated as a whole	Net (of reinsurance/SPV) total capital at risk
R0240	Other life (re)insurance and health (re)insurance obligations		C0050 1,752	C0060
R0250	Total capital at risk for all life (re)insurance obligations			10,031
	Overall MCR calculation			
R0300	Linear MCR	C0070 44		
R0310	SCR	553		
R0320	MCR cap	249		
R0330	MCR floor	138		
R0340	Combined MCR	138		
R0350	Absolute floor of the MCR	4,000		
R0400	Minimum Capital Requirement	C0070 4,000		